

NEWS SENTINEL

Real Estate

W E E K L Y



The Battery at Berkeley Park

The Spirit of Old Charleston, in the Heart of Farragut – page G6

Inside:

- Knoxville Mortgage Guide
- Open House directory and maps

ON THE COVER



From left, Pinckney Place, Drayton and Manigault Manor. All fit Plans A and B.

The Battery at Berkeley Park

The Spirit of Old Charleston, in the Heart of Farragut

By Ronda Robinson

Special Publications correspondent

A new community in Farragut evokes the romance and charm of the Old South.

From magnolias and crepe myrtles to gables and gas lanterns, The Battery at Berkeley Park is designed to evoke the spirit of Charleston, S.C.

“The inspiration for the residential community is Charleston. My wife, Mariane, and I always stay at bed-and-breakfast inns at the Battery,” says Phil Cobble, developer and real estate broker.

During their travels the Cobbles took 2,000 digital photos to capture ideas for The Battery at Berkeley Park – where lots will begin selling in April.

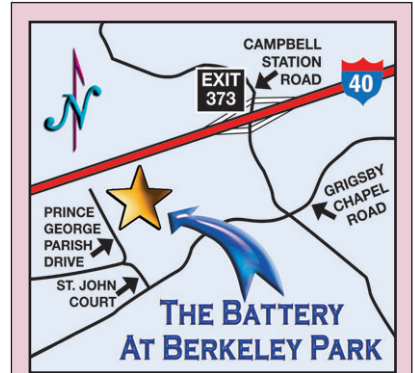
The history and beauty of Charleston, located on the South Carolina coast, caught the couple’s imagination. Charleston began in the 1600s as an English settlement. Over the next few centuries it became one of the most important cities on the East Coast, playing a major role in the Civil War as a major Southern port.

Back in Knoxville, The Battery at Berkeley Park marries Colonial-style architecture with 21st century conveniences.

“I interviewed Stephen Davis and asked if he would be interested in drawing 18 home plans that represent The Battery,” says Phil Cobble, referring to the residential designer whose credits include the 2006 Knoxville Symphony League Show House.

“His versatility of style and success with upscale home design is what attracted me,” he adds.

Davis says, “The floor plans include the elements necessary for today’s modern lifestyle while exhibiting the historical exterior features The Battery is famous for.”



THE BATTERY AT BERKELEY PARK

Developer: Phil Cobble

Builders: Preferred Builders Program; contact Phil Cobble for details and an appointment.

Location: Farragut

Directions: Take Interstate 40/75 to Campbell Station Road exit. Go south on Campbell Station toward Kingston Pike. Turn right onto Grigsby Chapel Road at traffic light. Go 1.2 miles and take a right on St. John Court. Go approximately 1/4 mile to first stop sign (at Berkeley Park fountain entrance), and turn right onto Prince George Parish Drive. Follow to clubhouse and Battery entrance.

Listing agent: Phil Cobble of Realty Executives Associates/Turkey Creek

For more information: 675-7000 (office), 257-1166 (cell); www.thebatteryhomes.com

Knoxville NEWS SENTINEL
KnoxNews.com

Real Estate Weekly is produced by the News Sentinel's Special Publications Department.

Editor: Wade Saye (342-6880)

Designer: Jim Lind

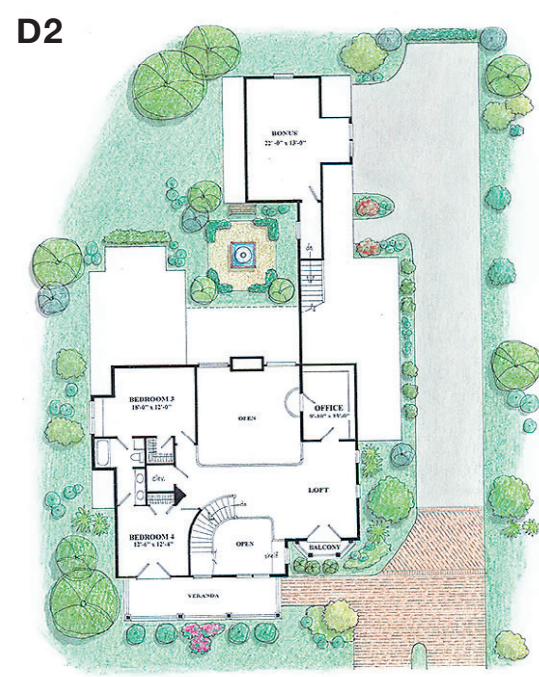
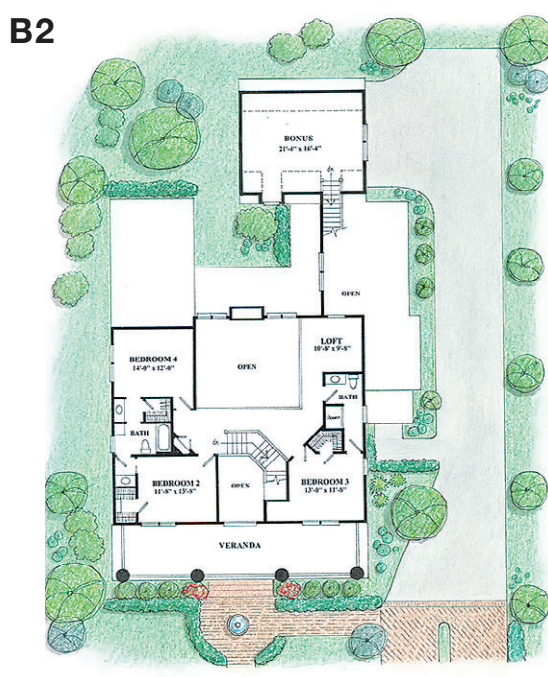
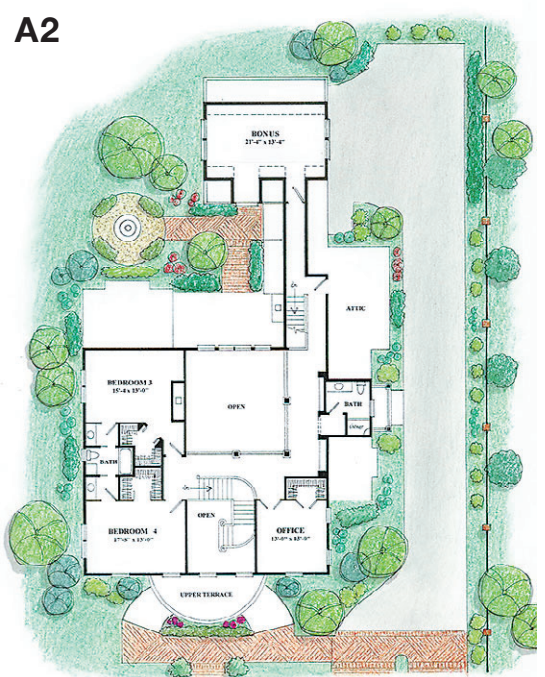
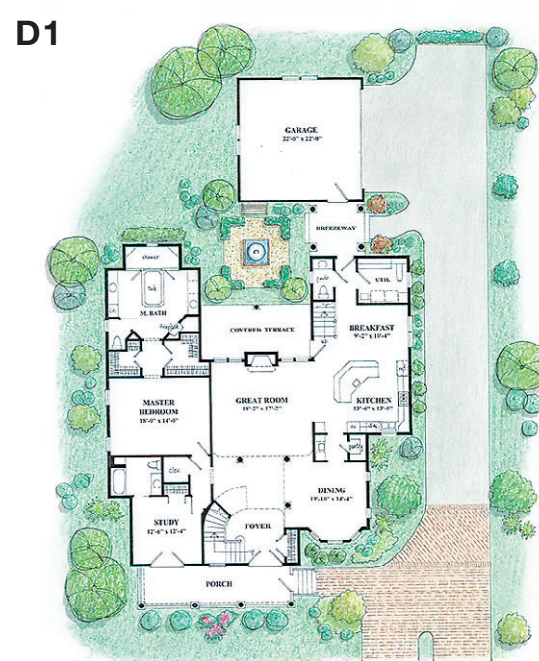
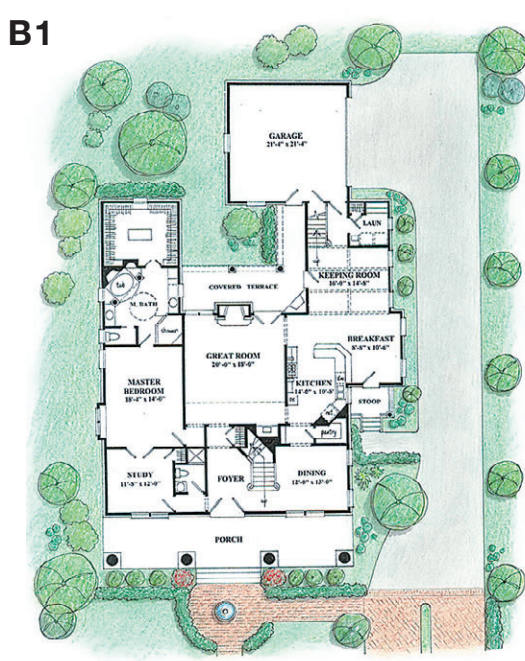
Staff writer: Michelle Gibson (342-6882)

Renderings: Provided

On the cover: Edisto Hall (fits Plan D only)

Next week:

Rarity Ridge's Towne Center almost completed in Roane County.



Three of the eight distinctive floor plans and 18 exterior elevations available in The Battery at Berkeley Park. Plan A: main level 2,603 square feet, upper 1,784 (including bonus room); total 4,387 square feet. Plan D: main 2,434, upper 1,409 (including bonus room); total 3,843. Plan B: main 2,359, upper 2,024; total 4,383.

The home plans range from Federal style homes to plantation style Greek Revival to the classic Charleston Single House. Davis designed them exclusively for The Battery at Berkeley Park, with historical consultations by interior designer Summer Henry.

It's only appropriate that Charleston-inspired homes pay homage to history. Charleston was the first city in the United States to enact a preservation ordinance. The city celebrates its rich past not only through its Battery area on the water, but also homes, plantations, museums and markets.

Cobble calls the concept of his new Knoxville development "historically relevant."

"They offer features and amenities that are uncommon to this area," he says. Those include brick and mahogany porches with columns and fountains in the yard of each home.

Other features of The Battery at Berkeley Park's custom homes will include slate, tile, standing-seam metal and shingle roofing; three-

car garages; two-story piazzas and columned terraces; outdoor wood-burning fireplaces with kitchenettes; elevators; 10-foot ceilings; main-level master and guest bedrooms; rotunda-shaped master baths with 13-foot domed ceilings; and Sub-Zero and Wolf stainless appliances.

Exteriors range from brick and stucco to Tabbystone and Hardie Plank. "Some of the exteriors are adaptable for up to three floor plans," notes Cobble.

Homeowners will collaborate with the builder and interior designer on color palettes and exterior materials to suit their individual taste.

Cobble envisions his newest development to be a genteel world of front porches lit by gas lanterns, sweeping driveways, tree-lined boulevards, elegant fountains, and private garden courtyards with black-bottom lap pools.

In every front yard, ledge walls and ornate wrought-iron railings will give the effect of formal gardens.

The graceful lifestyle carries over into common areas such as a half-acre park with rose arbors, magnolias, crepe myrtles and lighted walking paths.

Michael Versen, AIA, is landscape architect for The Battery.

"There are sidewalks throughout The Battery and Berkeley," says Cobble, referring to another of his developments. The Battery borders Berkeley Park, property just off Grigsby Chapel Road, which the Realtor developed in the late 1990s.

He named Berkeley Park for one of the original colonial plantations on the St. James River in Virginia. Modeled after Thomas Jefferson's home, the clubhouse sits on 2 1/4 wooded acres and features Doric columns, an elaborate 45-foot veranda, arched brick fireplace, chef's stainless-steel kitchen with bar, and a commercial grill for social or family gatherings poolside.

The clubhouse will be open to residents of The Battery at Berkeley Park as well.

Located on 26 acres, The Battery is actually the